

MALDIVES LAND AND SURVEY AUTHORITY

MINISTRY OF HOUSING AND INFRASTRUCTURE

Office (PABX): +(960) 3004300, Fax: +(960) 3004254

Ameenee Magu, Maafannu, Male', 20392, Maldives.

Email: survey@housing.gov.mv

Web: www. surveyofmaldives.gov.mv



CONTROL POINT DETAILS		Station Number	PSM5796
Coordinate Information			
Geodetic		Grid	
WGS 84		UTM Zone 43	
Lat:	N4° 18' 30.7354"	E:	333620.990m
Long:	E73° 30' 02.7180"	N:	476395.429m
Ellp Height:	-92.795m	Orth Height:	1.401m MSL
Island Name:	AANUGAN'DUHURA	Date:	22/03/2021

Monument description & method of survey:

Type A Monument - Urban Configuration

Finish level is Approx. 100mm below ground

GNSS Static Observation for more than 2 hours 30mins and post processed to reduce coordinates

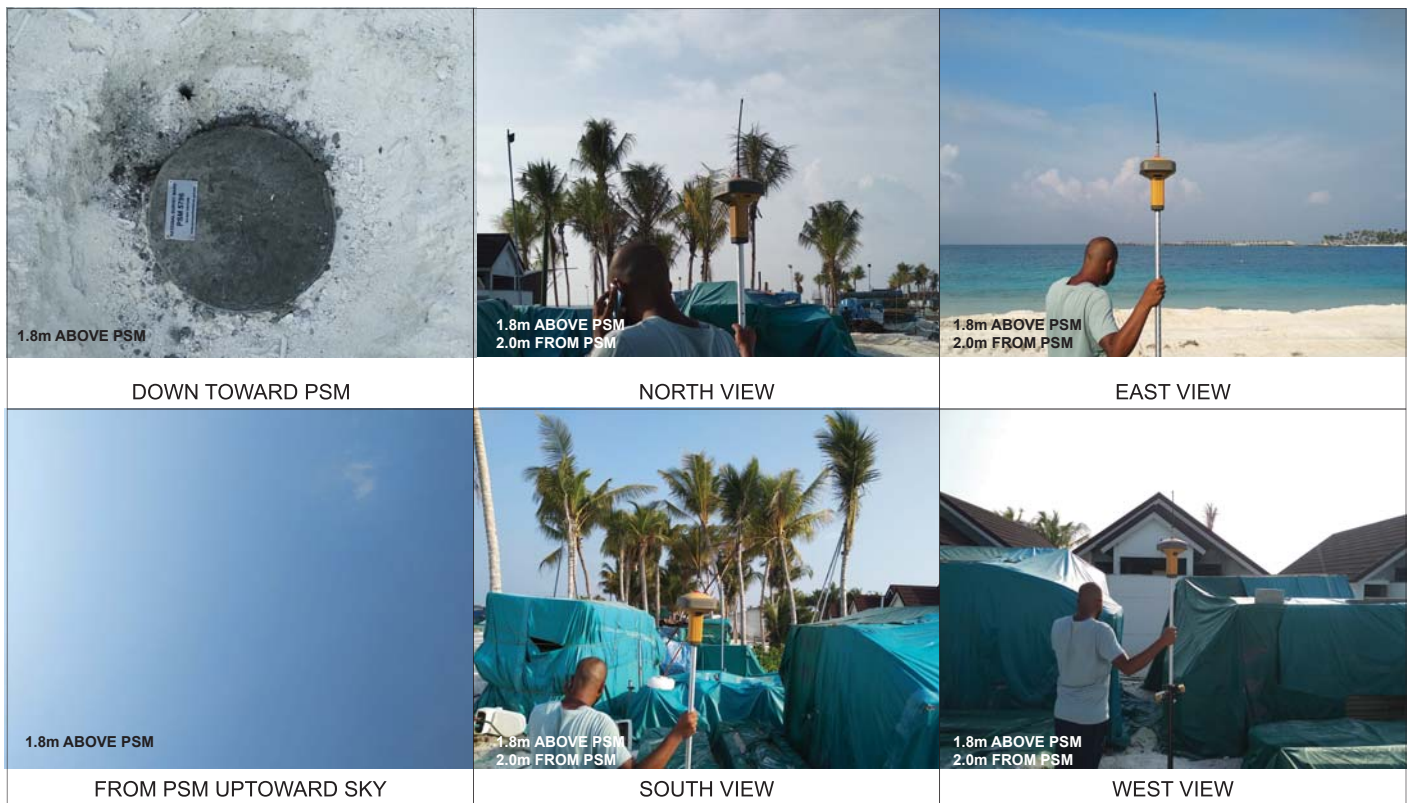
Vertical height transferred by static processed vertical coordinate from PSM5797.

Vertical Datum (MSL) was adjusted by transferring MSL datum to PSM 5797 by RTK observation to water level.

General site condition & access:

- Easy Acces.
- Open area with open sky.
- East of third beach villa from the North.

Owner: AQUA BLUE INVESTMENT PVT LTD

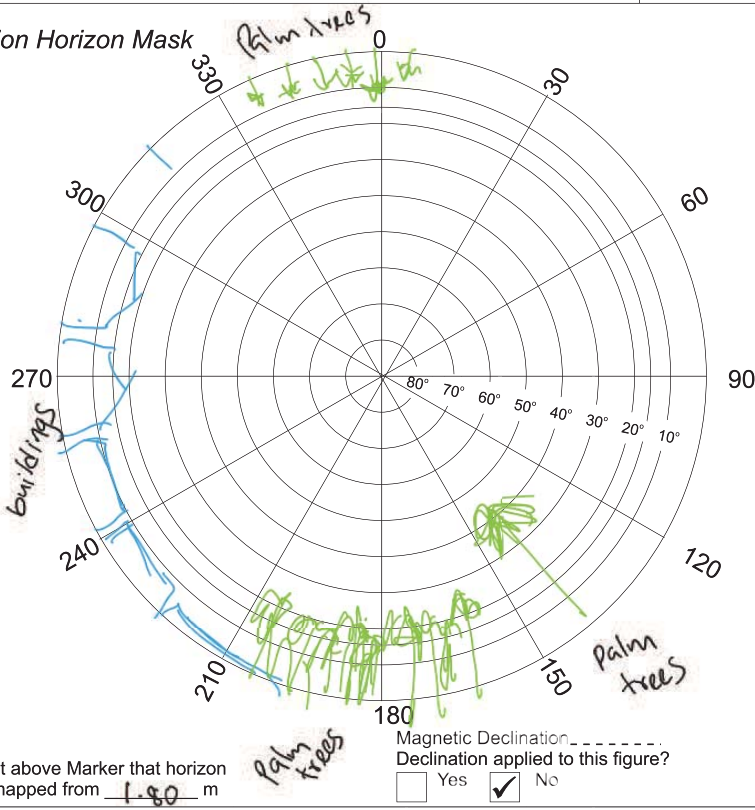


SITE INFORMATION

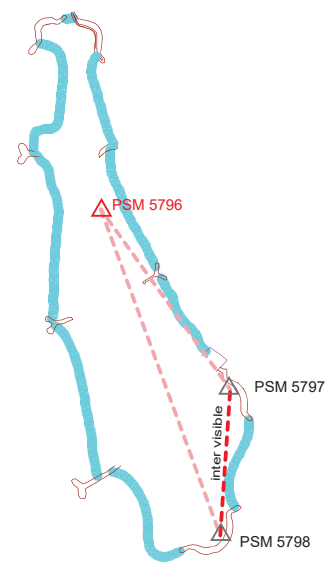
Station Number

P S M 5796

Station Horizon Mask

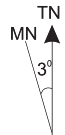


Locality



Height above Marker that horizon was mapped from 1.80 m

Magnetic Declination Declination applied to this figure?
 Yes No



North

BEACHVLLA
2nd From North

BEACHVLLA
3rd from North

BEACHVLLA
4th from North

11.6

9.2

10.7

PSM5796

HIGH WATER LINE

LOW WATER LINE

Sketched by: MONA H AHMED

Scale: Not to scale

Date: 22/03/2021

MALDIVES LAND AND SURVEY AUTHORITY

MINISTRY OF HOUSING AND INFRASTRUCTURE

Office (PABX): +(960) 3004300, Fax: +(960) 3004254

Ameenee Magu, Maafannu, Male', 20392, Maldives.

Email: survey@housing.gov.mv

Web: www. surveyofmaldives.gov.mv



CONTROL POINT DETAILS		Station Number	PSM5797
Coordinate Information			
Geodetic		Grid	
WGS 84		UTM Zone 43	
Lat:	N4° 18' 25.8647"	E:	333728.140m
Long:	E73° 30' 06.2026"	N:	476245.615m
Ellp Height:	-92.796m	Orth Height:	1.344m MSL
Island Name:	AANUGAN'DUHURA	Date:	22/03/2021

Monument description & method of survey:

Type A Monument - Urban Configuration

Finish level is Approx. 100mm below ground.

GNSS Static Observation for more than 5 hours 30mins and post processed to reduce coordinates.

Vertical height transferred from this mark to others by static processed vertical coordinate.

Vertical Datum (MSL) was adjusted by transferring MSL datum to this mark by RTK observation to water level.

In-addition to other marks in this island, this mark is used to transfer MSL value for Aanugan'dufinolhu in the same Lagoon.

General site condition & access:

- Easy Acces.
- Open area with open sky.
- Near the proposed Supply Jetty and about 3.6 meter from revetment

Owner: AQUA BLUE INVESTMENT PVT LTD

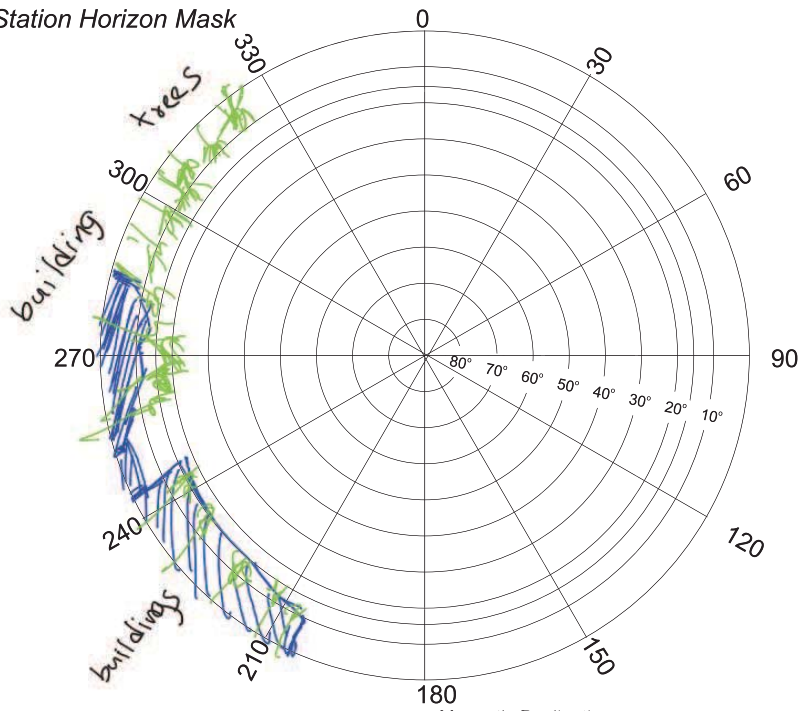


SITE INFORMATION

Station Number

P S M 5797

Station Horizon Mask

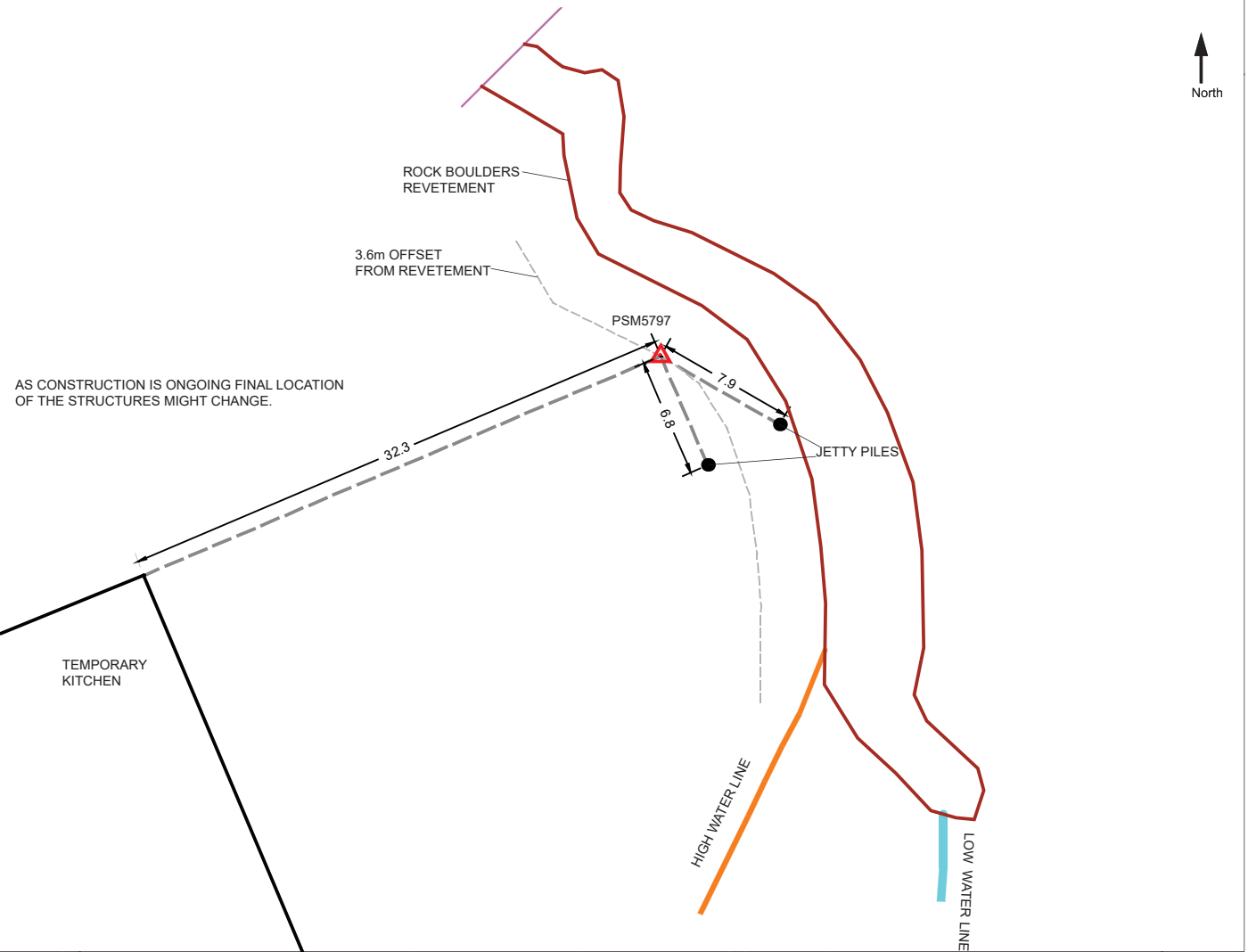
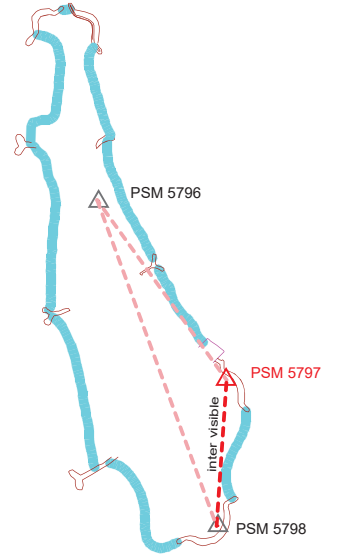


Height above Marker that horizon was mapped from 1.80 m

Magnetic Declination _____
 Declination applied to this figure?
 Yes No



Locality



Sketched by: **MUNAH AHMED**

Scale: Not to scale

Date: **22/03/21**

MALDIVES LAND AND SURVEY AUTHORITY

MINISTRY OF HOUSING AND INFRASTRUCTURE

Office (PABX): +(960) 3004300, Fax: +(960) 3004254

Ameenee Magu, Maafannu, Male', 20392, Maldives.

Email: survey@housing.gov.mv

Web: www. surveyofmaldives.gov.mv



CONTROL POINT DETAILS		Station Number	PSM5798
Coordinate Information			
Geodetic		Grid	
WGS 84		UTM Zone 43	
Lat:	N4° 18' 21.8928"	E:	333720.832m
Long:	E73° 30' 05.9734"	N:	476123.631m
Ellp Height:	-92.796m	Orth Height:	1.400m MSL
Island Name:	AANUGAN'DUHURA	Date:	22/03/2021

Monument description & method of survey:

Type A Monument - Urban Configuration

Finish level is Approx. 100mm below ground.

GNSS Static Observation for more than 1hour 15mins and post processed to reduce coordinates.

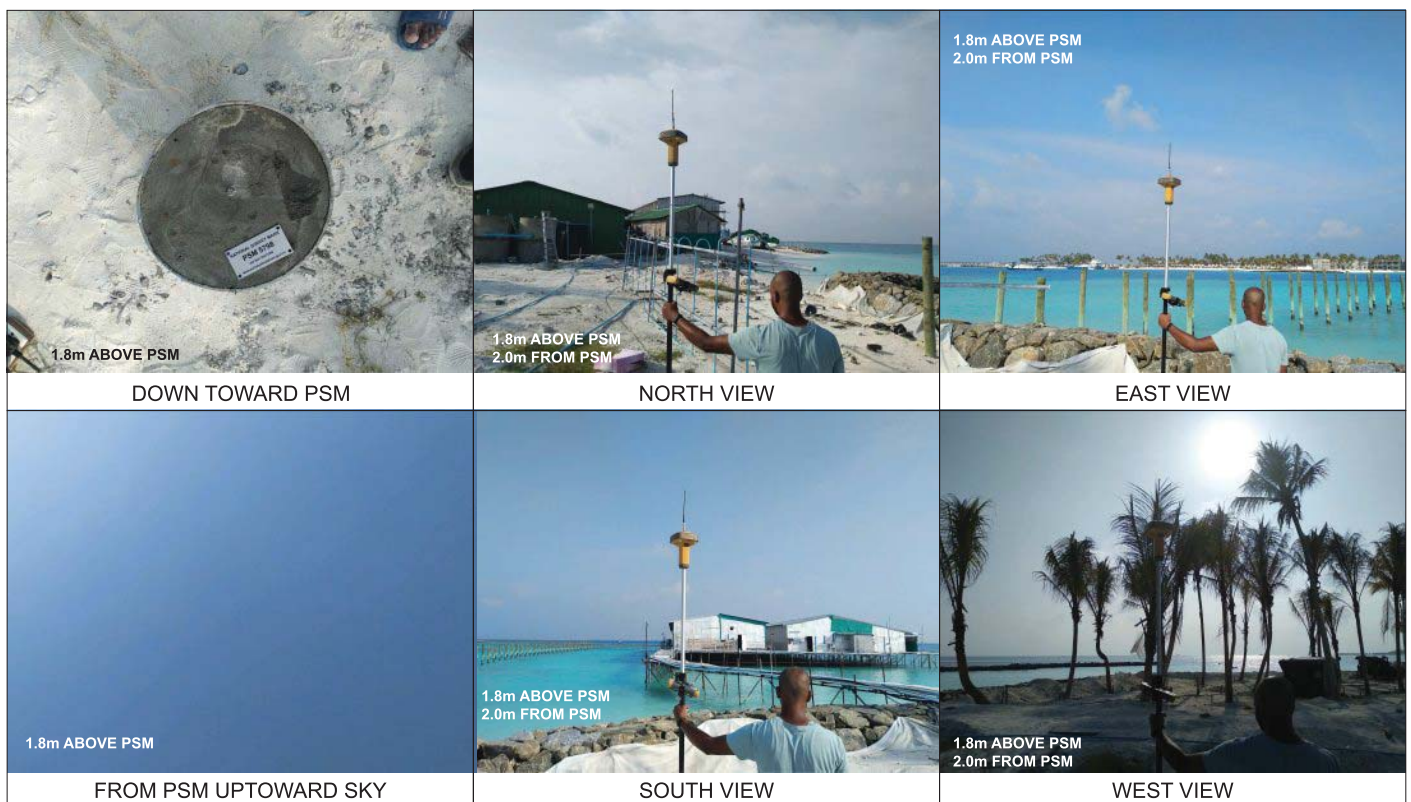
Vertical height transferred by static processed vertical coordinate from PSM5797.

Vertical Datum (MSL) was adjusted by transferring MSL datum to PSM5797 by RTK observation to water level.

General site condition & access:

- Easy Acces.
- Open area with open sky.
- Near jetty connecting two islands and about 3 m from revetment.

Owner: AQUA BLUE INVESTMENT PVT LTD

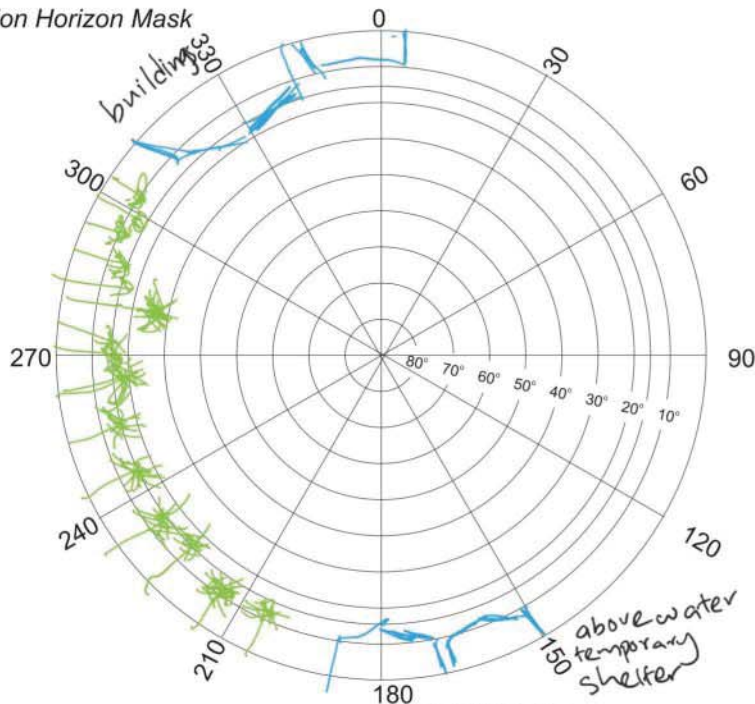


SITE INFORMATION

Station Number

PSM 5798

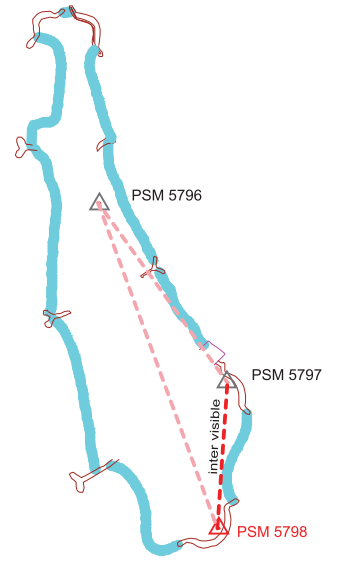
Station Horizon Mask



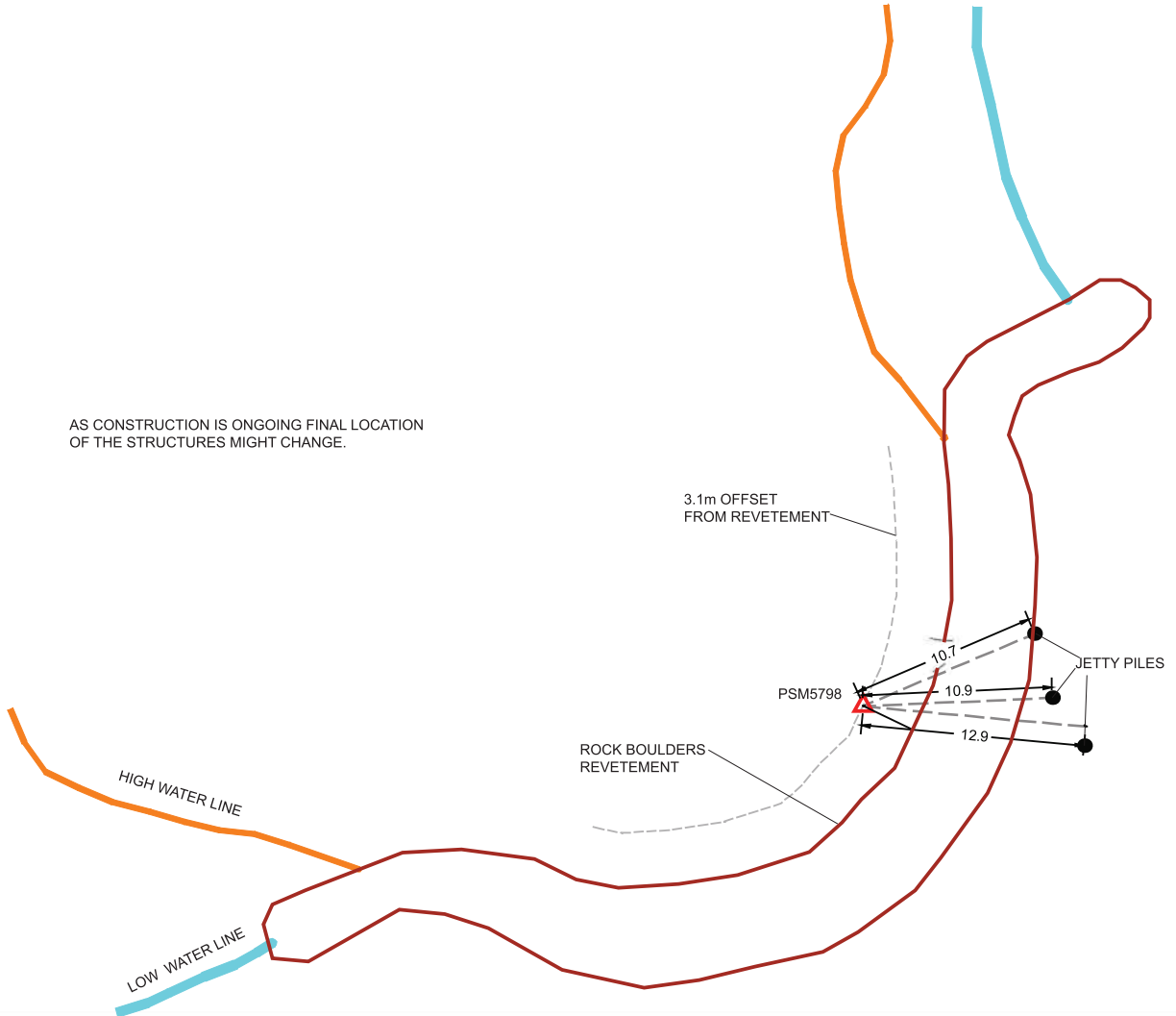
Height above Marker that horizon was mapped from 1.80 m

Magnetic Declination _____
Declination applied to this figure?
 Yes No

Locality



AS CONSTRUCTION IS ONGOING FINAL LOCATION OF THE STRUCTURES MIGHT CHANGE.



Sketched by: MUNAH AHMED

Scale: Not to scale

Date: 22/03/2021